

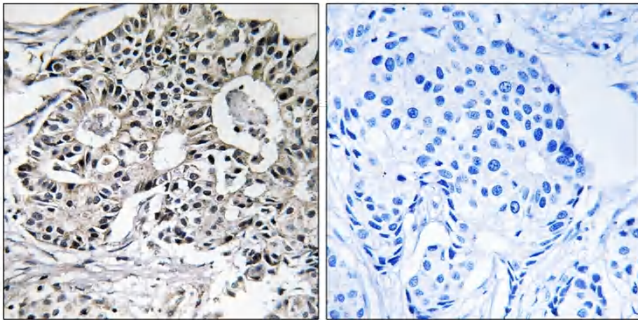


Pxmp2 Polyclonal Antibody

Catalog No	YP-Ab-04107
Isotype	IgG
Reactivity	Human;Rat;Mouse;
Applications	IHC;IF;ELISA
Gene Name	PXMP2
Protein Name	Peroxisomal membrane protein 2
Immunogen	The antiserum was produced against synthesized peptide derived from human PXMP2. AA range:38-87
Specificity	Pxmp2 Polyclonal Antibody detects endogenous levels of Pxmp2 protein.
Formulation	Liquid in PBS containing 50% glycerol, 0.5% BSA and 0.02% sodium azide.
Source	Polyclonal, Rabbit,IgG
Purification	The antibody was affinity-purified from rabbit antiserum by affinity-chromatography using epitope-specific immunogen.
Dilution	IHC: 1/100 - 1/300. ELISA: 1/20000.. IF 1:50-200
Concentration	1 mg/ml
Purity	≥90%
Storage Stability	-20°C/1 year
Synonyms	PXMP2; PMP22; Peroxisomal membrane protein 2; 22 kDa peroxisomal membrane protein
Observed Band	
Cell Pathway	Peroxisome membrane; Multi-pass membrane protein.
Tissue Specificity	Muscle,Retina,Retinoblastoma,
Function	function:Seems to be involved in pore-forming activity and may contribute to the unspecific permeability of the peroxisomal membrane.,similarity:Belongs to the peroxisomal membrane protein PXMP2/4 family.,subunit:Interacts with PEX19 and SIVA1.,
Background	function:Seems to be involved in pore-forming activity and may contribute to the unspecific permeability of the peroxisomal membrane.,similarity:Belongs to the peroxisomal membrane protein PXMP2/4 family.,subunit:Interacts with PEX19 and SIVA1.,
matters needing attention	Avoid repeated freezing and thawing!

**Usage suggestions**

This product can be used in immunological reaction related experiments. For more information, please consult technical personnel.

Products Images

Immunohistochemistry analysis of paraffin-embedded human breast carcinoma, using PXMP2 Antibody. The picture on the right is blocked with the synthesized peptide.